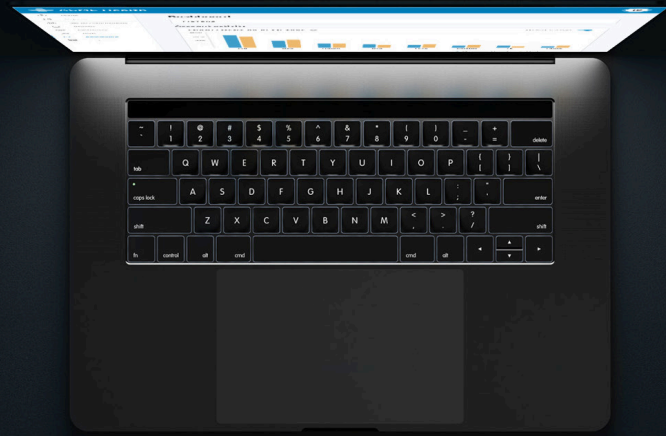


NEW Employer Portal

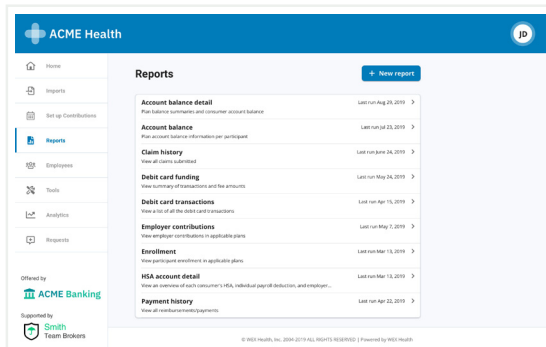
Coming March 6, 2021, the ^{NEW} Employer Portal is highly intuitive, streamlined, and vastly improves your user experience.



With the *NEW* Employer Portal, you will be able to:

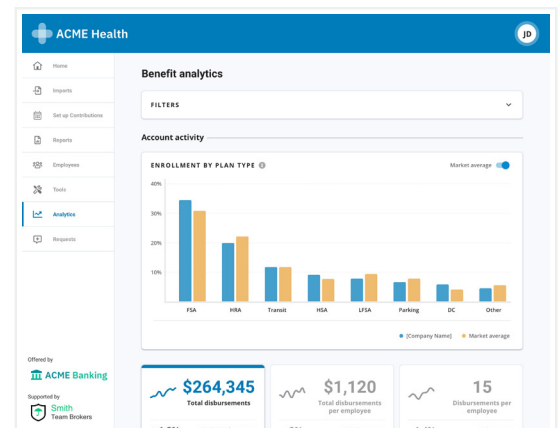
Quickly find the information you need (right when you need it).

Whether you want to know the status of file imports, access reporting, or jump into employee-specific information, you can quickly find what you need with new at-a-glance visuals on the redesigned homepage.



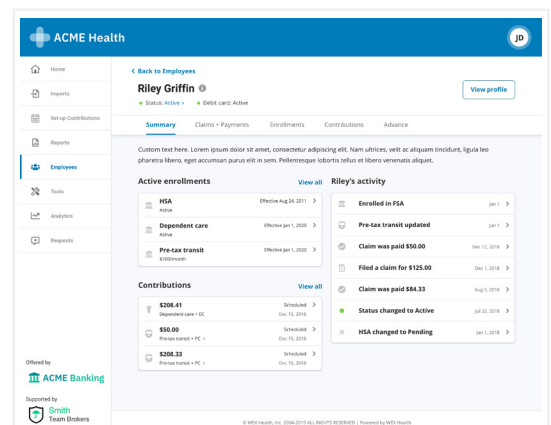
Save time searching for employee-specific information.

With improved navigation and search capabilities, the *NEW* Employer Portal makes it easy for you to quickly find an employee and then view a summary (or choose to dive into the details) of their enrollments, contributions, and recent activity.



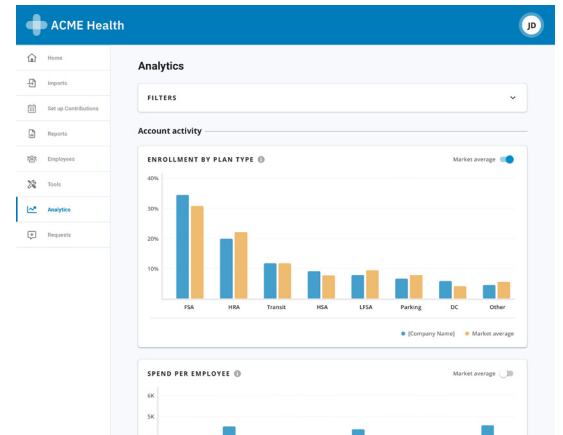
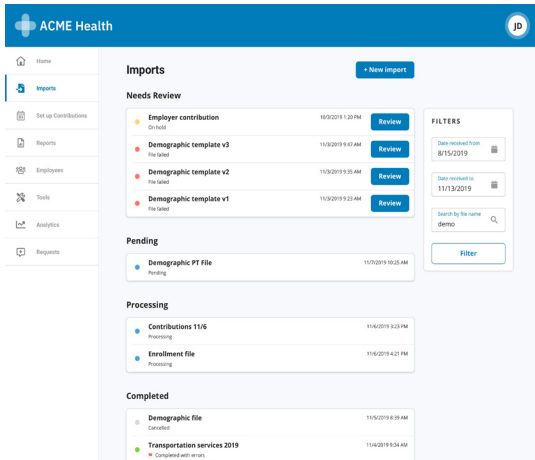
Readily access, run, and download reports.

Reports (on-demand and recurring) are easier to find and, of course, can still be downloaded in the format that works best for you.



Track, promote, and improve future offerings and utilization with Benefit Analytics.

The *NEW* Employer Portal includes an overhaul of Benefit Analytics for employers (formerly known as your Employer Dashboard), and includes enhanced visuals, interactive data, benchmark comparisons, and helpful descriptions for easier data interpretation.*



Easily manage file imports.

With access to the import queue from the homepage, improved workflows (including a downloadable template and options for auto-populating contribution files), AND expandable views for each file to quickly view the details, it's never been easier for you to manage your data.*

Advantage™

ADMINISTRATORS